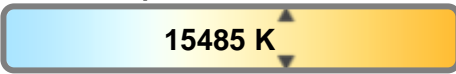


Color Temperature:



**Total Lumen Output:**  
**10450 lm**

Light Quality:

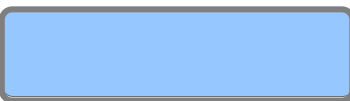


**Peak:**  
**60853 cd**

Light Efficiency:



**Power: 530 W**



CIE 1931  
x: 0.269  
y: 0.259

**Test: Full On**

**Date: 10/10/2018**

**Voltage: 116 V**

**Current: 4.57 A**

**Frequency: 60 Hz**

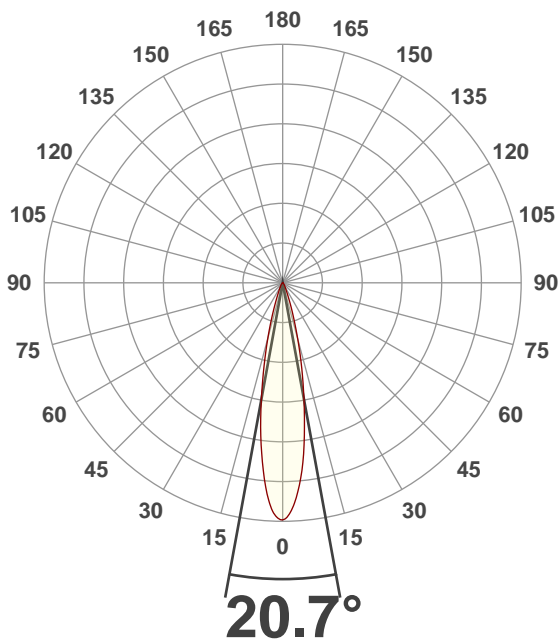
**CRI: 82.8**

**CQS: 87.3**

**TM30: 79.9**

**Note:**

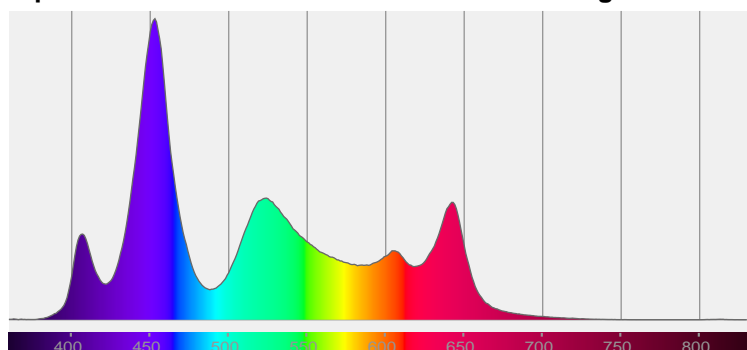
**Beam Angle**



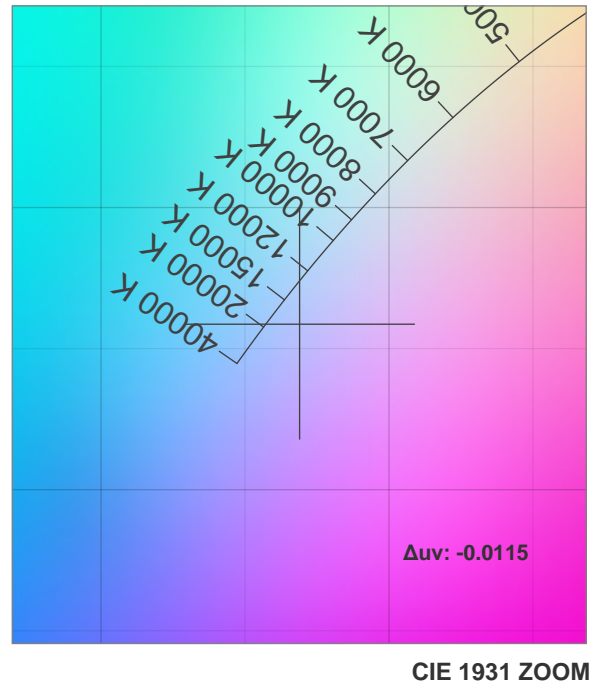
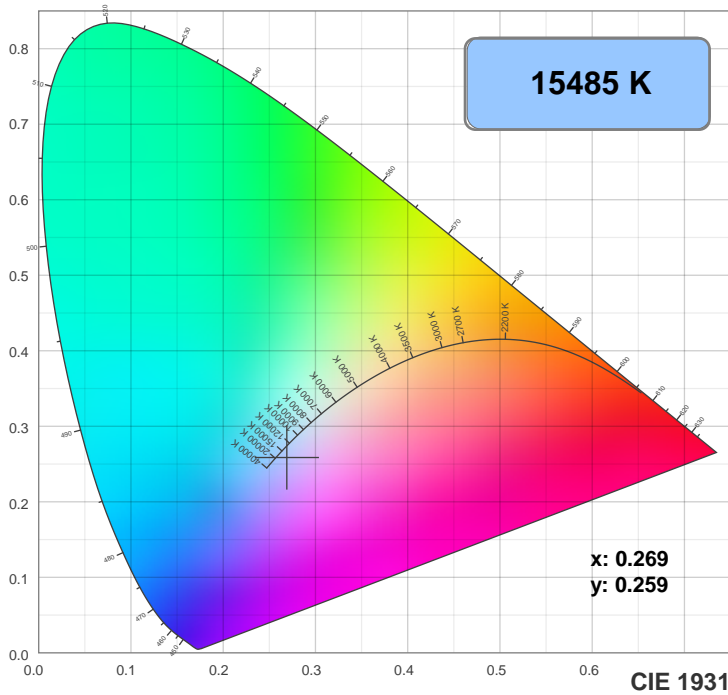
Beam Angle 50%	Field Angle 10%	Cutoff Angle 2.5%
20.7°	38.9°	56.2°

**Spectra**

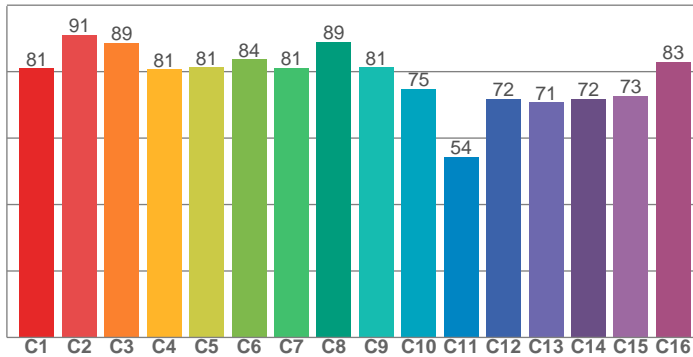
**Dominant Wavelength: 466nm**



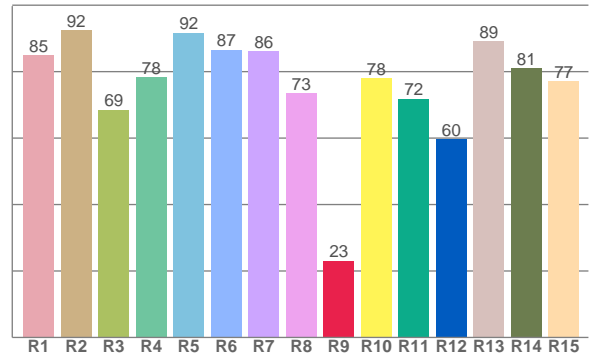
## Color Details



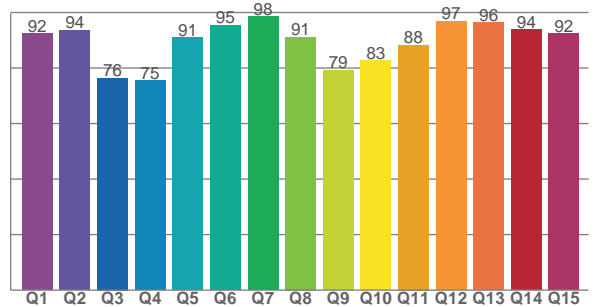
**TM30: 79.9**



**CRI: 82.8 (R1-R8)**



**CQS: 87.3**



CRI R values, only R1-R8 are used to calculate final CRI value

R1	R2	R3	R4	R5	R6	R7	R8	R9	R10	R11	R12	R13	R14	R15
85.0	92.4	68.6	78.4	91.7	86.5	86.2	73.4	23.1	78.0	71.9	59.6	89.2	81.0	77.2

TM30 C Values, 16 binned values out of total of 99 C values

C1	C2	C3	C4	C5	C6	C7	C8	C9	C10	C11	C12	C13	C14	C15	C16
80.9	91.1	88.6	80.7	81.3	83.7	81.1	89.0	81.3	74.8	54.4	71.8	70.7	71.8	72.6	83.0

CQS Q Values

Q1	Q2	Q3	Q4	Q5	Q6	Q7	Q8	Q9	Q10	Q11	Q12	Q13	Q14	Q15
92.3	93.6	76.4	75.4	91.0	95.4	98.5	91.1	79.2	82.6	88.3	96.9	96.3	93.8	92.4

## Color Parameters

Color Temperature	Color Rendering Index	Red Component	Color Fidelity	Color Gamut	Color Quality Scale	Color Coordinate CIE 1931	Color Coordinate CIE 1931	Color Coordinate	Color Coordinate	Color Deviation from Black Body
CCT	CRI	CRI R9	TM30 Rf	TM30 Rg	CQS	x	y	u	v	Δuv
15485 K	82.8	23.1	79.9	108.3	87.3	0.269	0.259	0.193	0.279	-0.0115

## TM30 Details

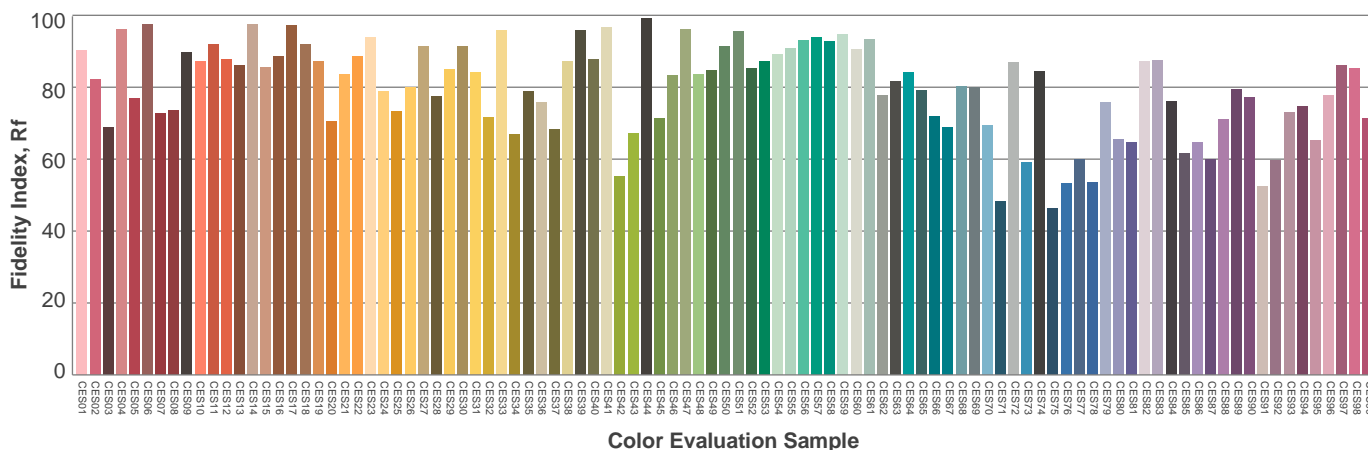
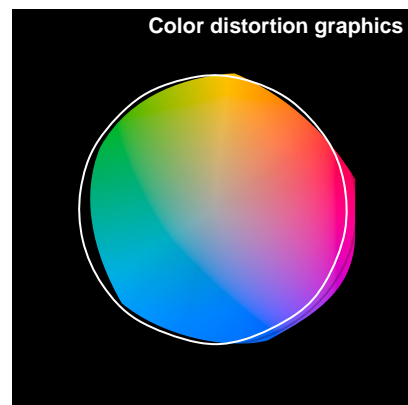
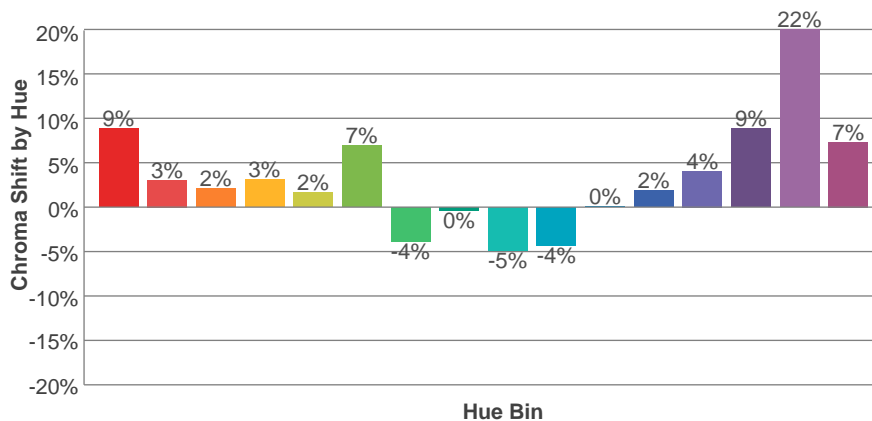
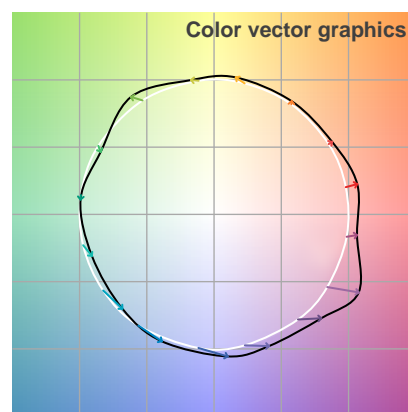
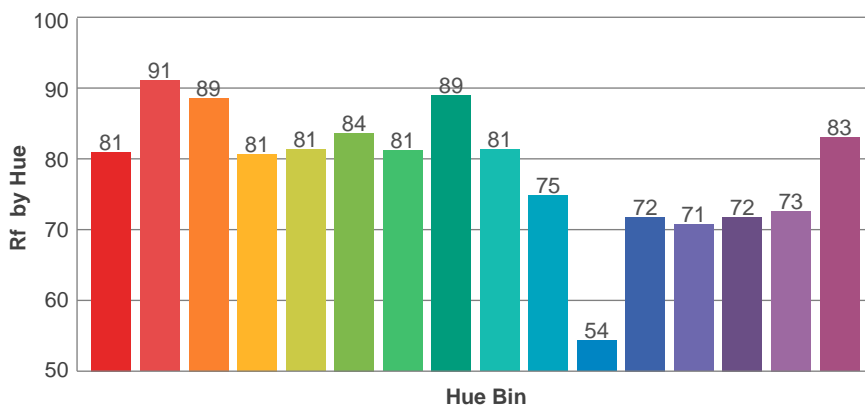
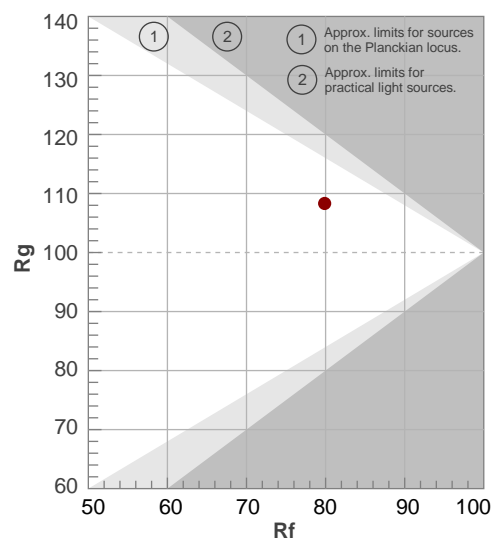
**Rf 79.9**

Fidelity Index Rf

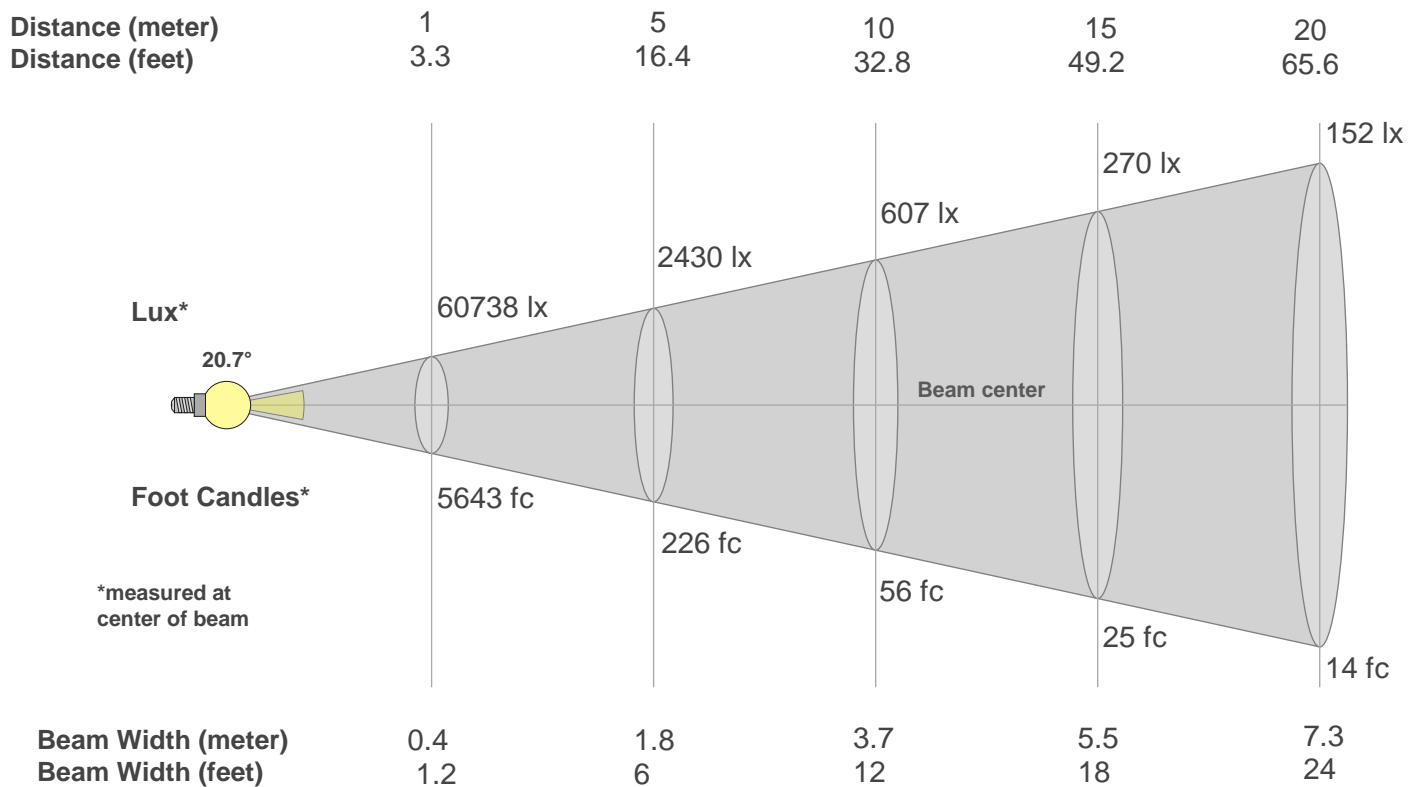
**Rg 108.3**

Gamut Index Rg

Hue Bin	R <sub>f</sub>	Graphic shifts (%)	
		Chroma	Hue
1	81	9%	1%
2	91	3%	0%
3	89	2%	1%
4	81	3%	7%
5	81	2%	5%
6	84	7%	6%
7	81	-4%	3%
8	89	0%	3%
9	81	-5%	9%
10	75	-4%	19%
11	54	0%	21%
12	72	2%	23%
13	71	4%	17%
14	72	9%	15%
15	73	22%	10%
16	83	7%	3%



## Beam Details



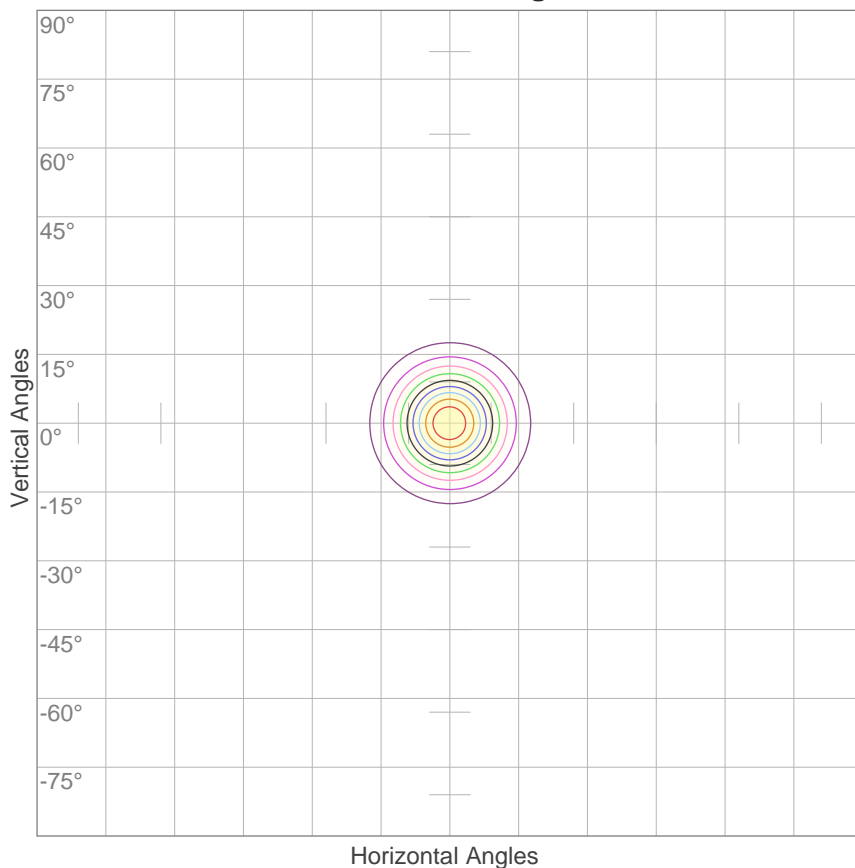
### Beam Intensities from 1-20m

m	1	2	3	4	5	6	7	8	9	10	11	12	13	14	15	16	17	18	19	20
ft	3.3	6.6	9.8	13.1	16.4	19.7	23	26.2	29.5	32.8	36.1	39.4	42.7	45.9	49.2	52.5	55.8	59.1	62.3	65.6
lx	60738	15184	6749	3796	2430	1687	1240	949	750	607	502	422	359	310	270	237	210	187	168	152
fc	5642.7	1410.7	627	352.7	225.7	156.7	115.2	88.2	69.7	56.4	46.6	39.2	33.4	28.8	25.1	22	19.5	17.4	15.6	14.1

Beam Angle 50%	Field Angle 10%	Cutoff Angle 2,5%	Intensity Ratio in 120° Cone	Intensity Ratio in 90° Cone
20.7°	38.9°	56.2°	99.9%	98.2%

## ISO Diagrams

### ISO Candela Diagram



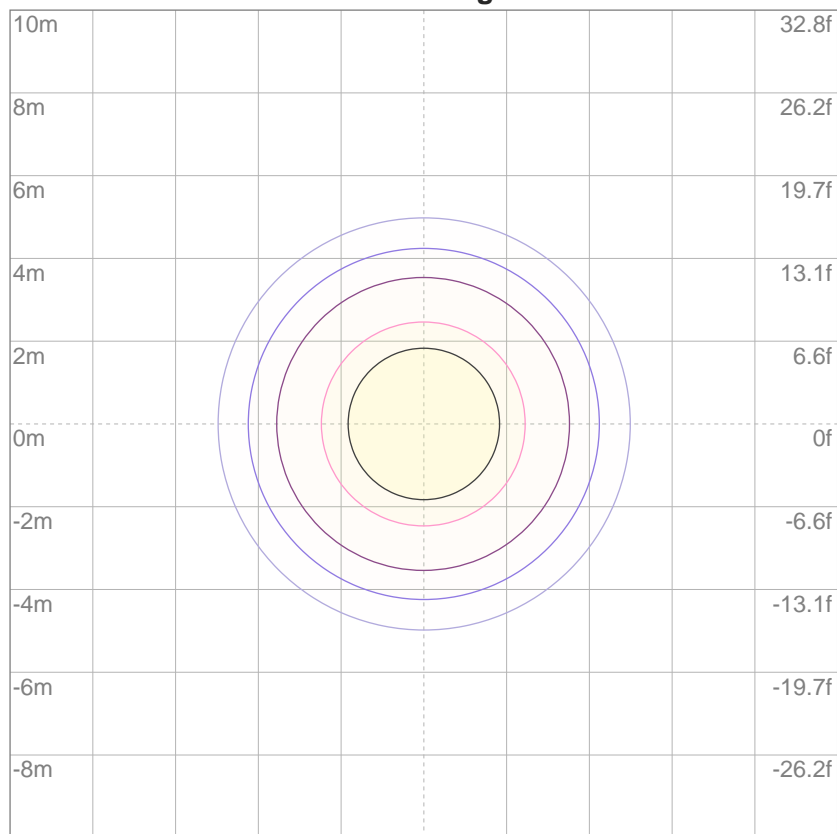
10%	6074 cd
20%	12148 cd
30%	18221 cd
40%	24295 cd
50%	30369 cd
60%	36443 cd
70%	42516 cd
80%	48590 cd
90%	54664 cd

#### Conditions:

Number of c-planes: 2

Candela at center: 60738 cd

### ISO Lux Diagram



3%	18.2 lx
5%	30.4 lx
10%	60.7 lx
30%	182 lx
50%	304 lx

#### Conditions:

Number of c-planes: 2

Lux at center: 607 lx

*Lux distribution on a surface  
when lamp is mounted at 10  
meters from the surface.*